

Welcome to the 2021 GEC Conference! This year's event is fully virtual and can be accessed via the platform at <https://apsgec2021.ispresenting.live>

When accessing the platform please use the latest version of Google Chrome, Microsoft Edge, or Mozilla Firefox.

These instructions are for the Remote Technical Session Presenters.



You will be emailed the zoom link for your session. Please be sure you update your zoom software to the latest version before joining the meeting and that zoom has permission to share your screen on the computer you intend to use.

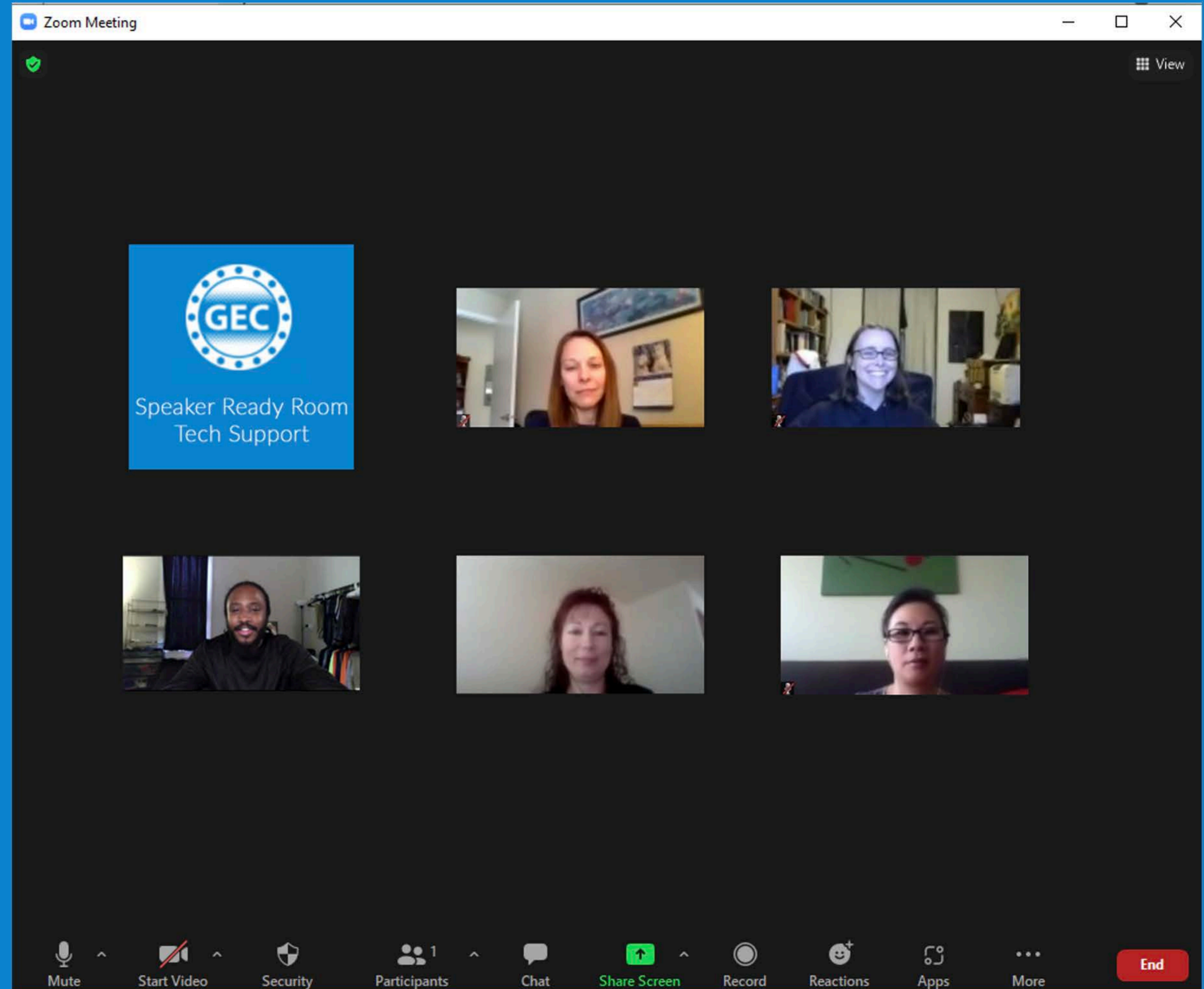


Virtual Speaker Ready Room

Once you have joined the zoom meeting that was emailed to you our room technician will greet you .

Think of this zoom meeting as a Virtual Speaker Ready room, where our technician will help you test your A/V and Screen Sharing. This room will never go live to the broadcast.

Once you are ready for your session, you will be sent to your Zoom Breakout that is dedicated to your Concurrent Session.



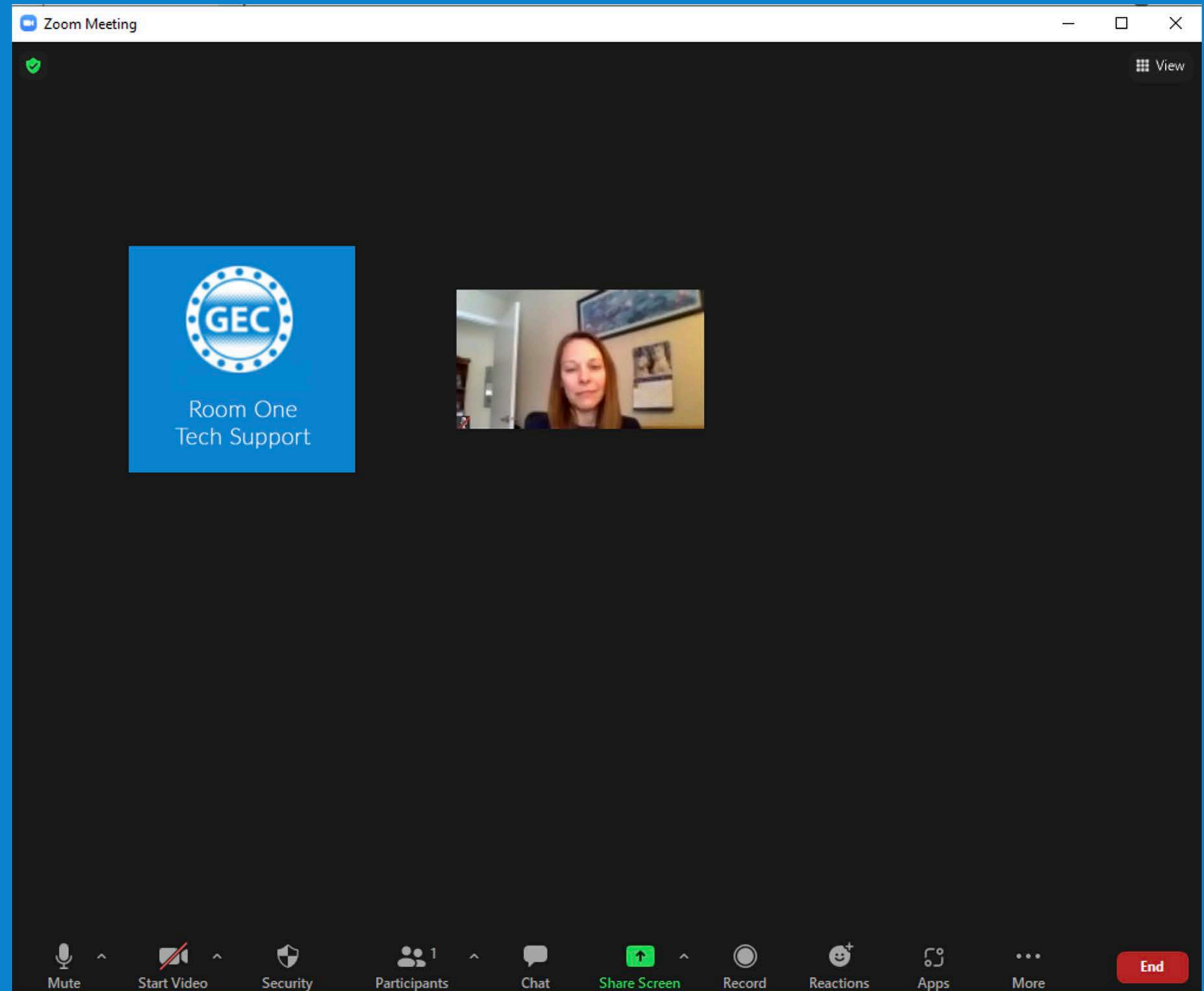
Concurrent Sessions

The Zoom Breakout is where you will present to the virtual platform.

While you are in queue to present, you will hear and see the current presentation like a normal zoom meeting.

The Session Technician will instruct you on when to share your screen again. Pay attention to the zoom chat while you are waiting.

The Session Chair will introduce you and read any questions received within in the allotted time.

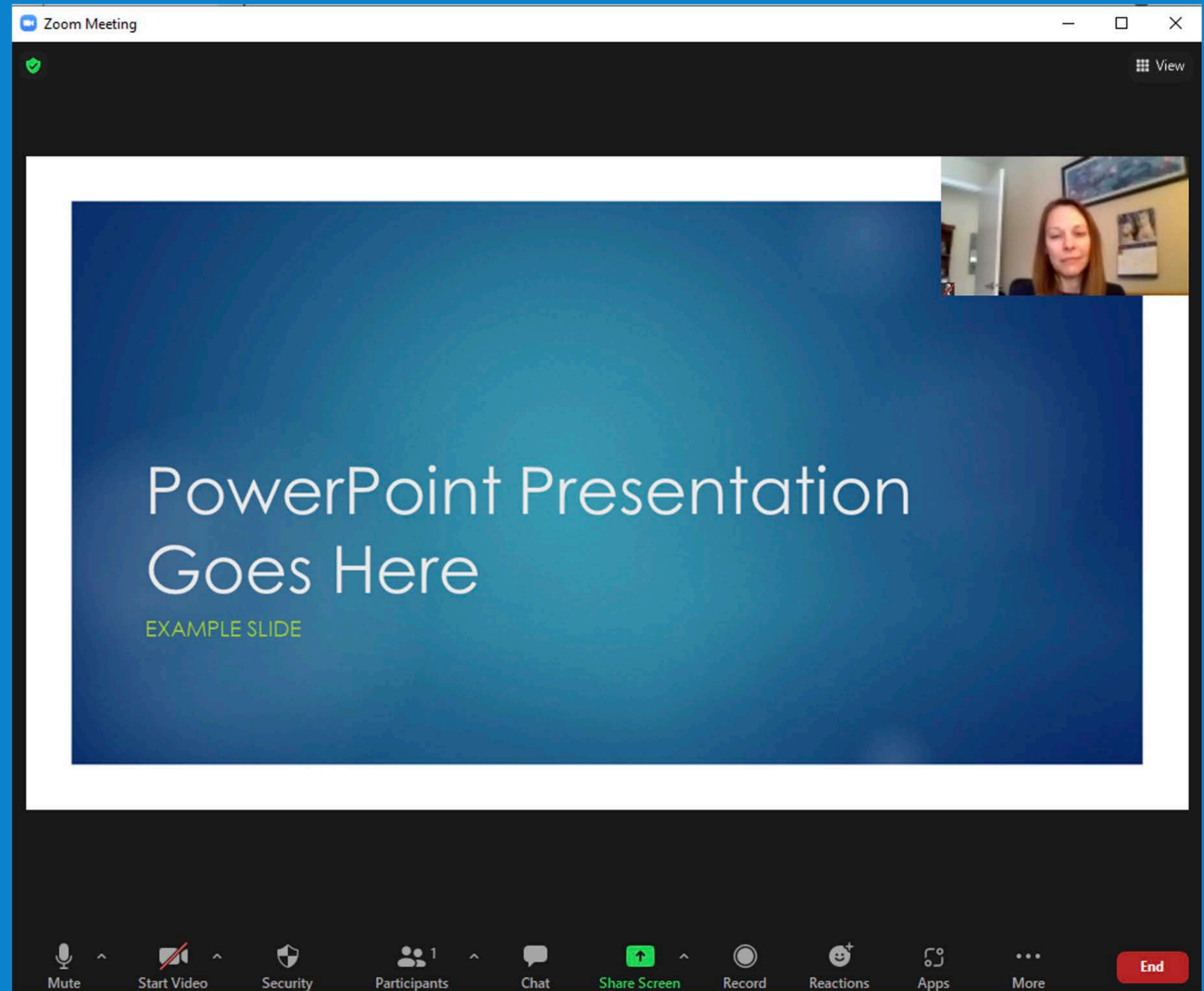


Concurrent Sessions

Now you are live on the Platform.

Even if your presentation is full screen on your computer, our technician will have a layout that will include your camera.

Please do not stop your screen share. Let the session technician handle when the slides are on and off screen.



Platform Interface Preview

This is how your presentation will look on the virtual platform

The screenshot displays the virtual platform interface for the 2021 APS Gaseous Electronics Conference. At the top, a dark blue header contains the GEC logo, the conference name, and navigation links for WELCOME, SCHEDULE, EXHIBITORS, and HELP DESK. Below this, a light blue banner identifies the current session as "Demo Live Room 1" running from 8:00am to 4:45pm CT. The main content area is split into two sections. On the left, a video player shows a speaker's video feed in a small window and a large PowerPoint slide with a dark blue background and white text that reads "PowerPoint Presentation Goes Here" and "EXAMPLE SLIDE". The video player includes a progress bar at the bottom showing 0:03 / 1:14 and icons for play, volume, and settings. On the right, a "Q&A" sidebar is visible, featuring a text input field labeled "Ask the speaker" and "Type your question", a question mark icon, and a red "Ask" button. At the bottom of the interface, a light blue navigation bar contains icons and labels for "TECH SUPPORT", "CHAT", "Q&A" (which is highlighted), and "FULLSCREEN".



Presentation Time and Q&A

The time limits for each presentation are generally as follows with some exceptions.

- Contributed talks are 12 minutes + 3 minutes for Q&A
- Invited Talks are 25 min + 5 minutes for Q&A

The Session Chair will moderate the questions from the platform. They will also stop you when your time is up. It is very important to end your presentation on time.

And lastly, please make sure your zoom software is up to date with the most current version .

Thank you for joining us!

